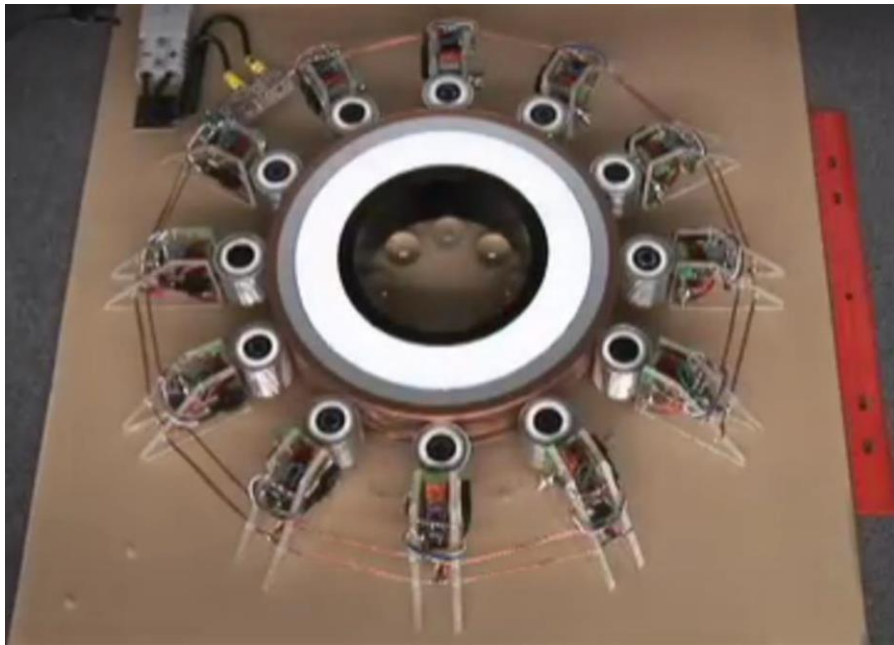


Gallery
Clean Energy
Inventions

Spintronic Generator

A Spintronic Generator operates as both a motor and generator.



STG product enclosure for a home unit.

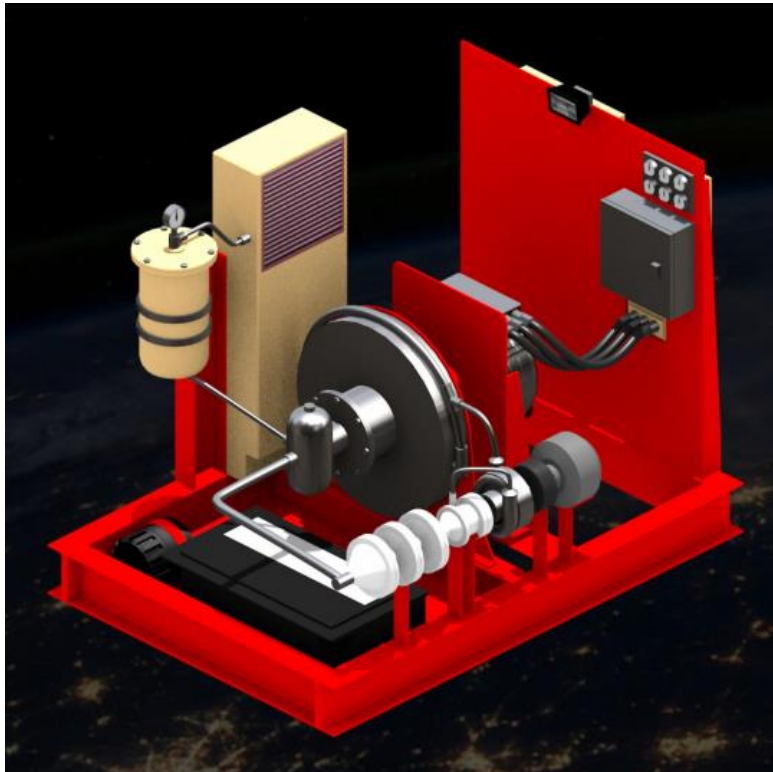
Solar Radiant Energy

A 1-square-foot solar radiant energy panel produces over 300 watts 24/7.



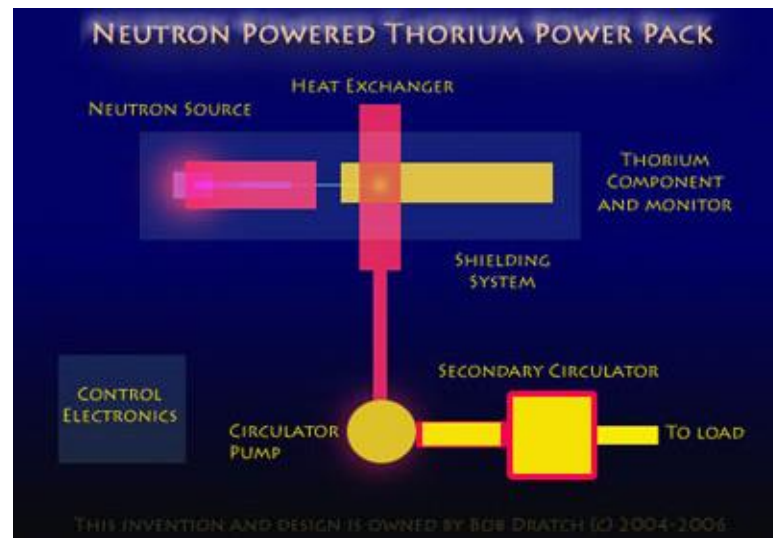
Recirculating Heat Pump Turbine

Humid air is compressed to produce a constant power output.



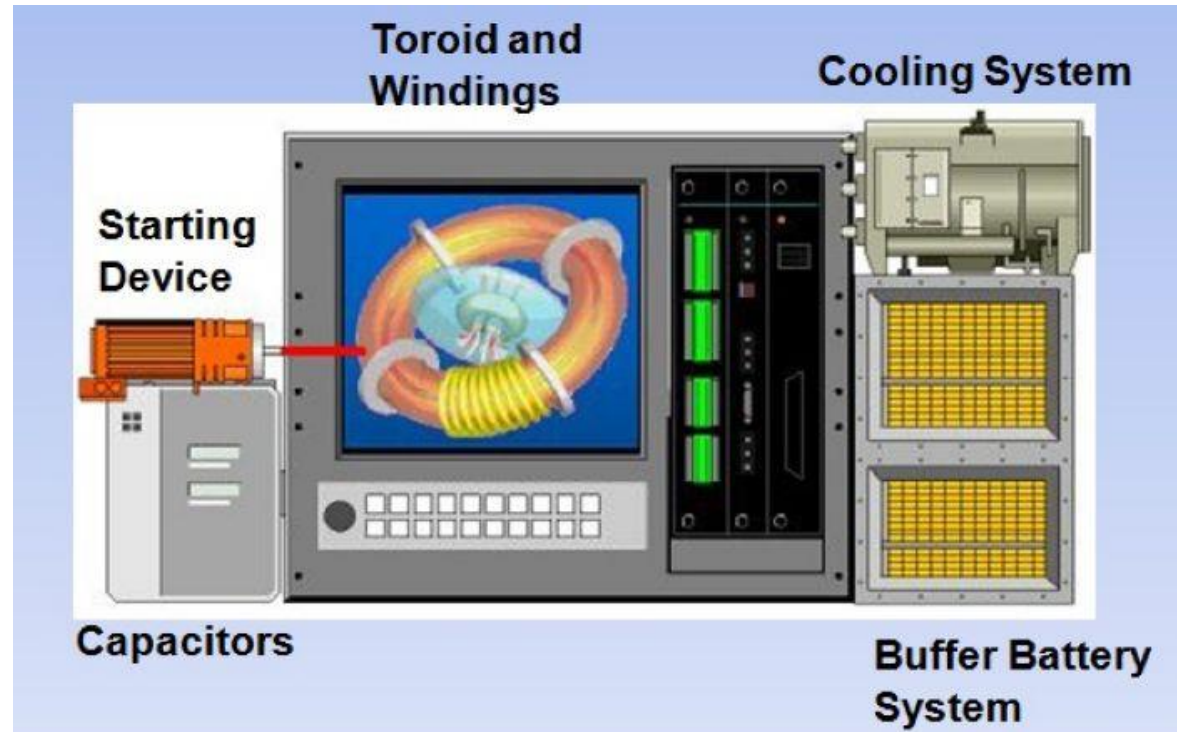
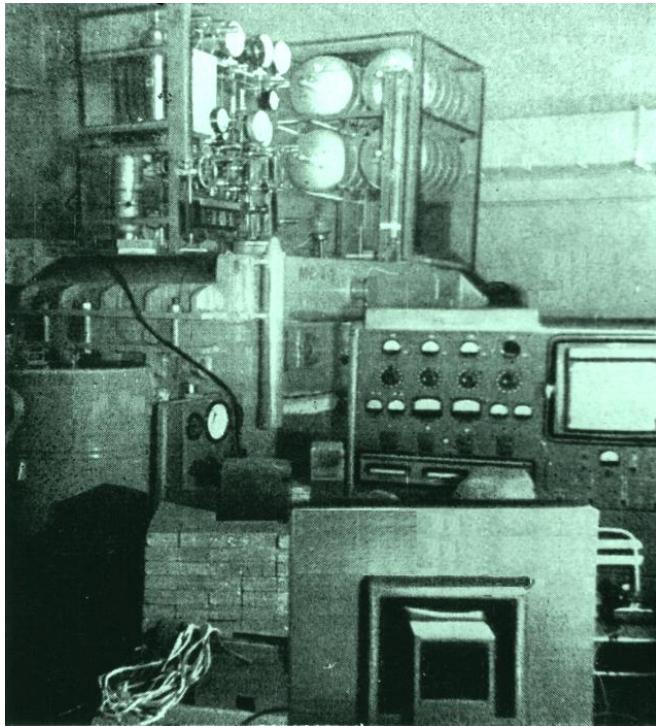
Thorium Power Pack

The thorium power pack could generate 50 to 1000 kilowatts of electricity at one-tenth of current electricity prices.



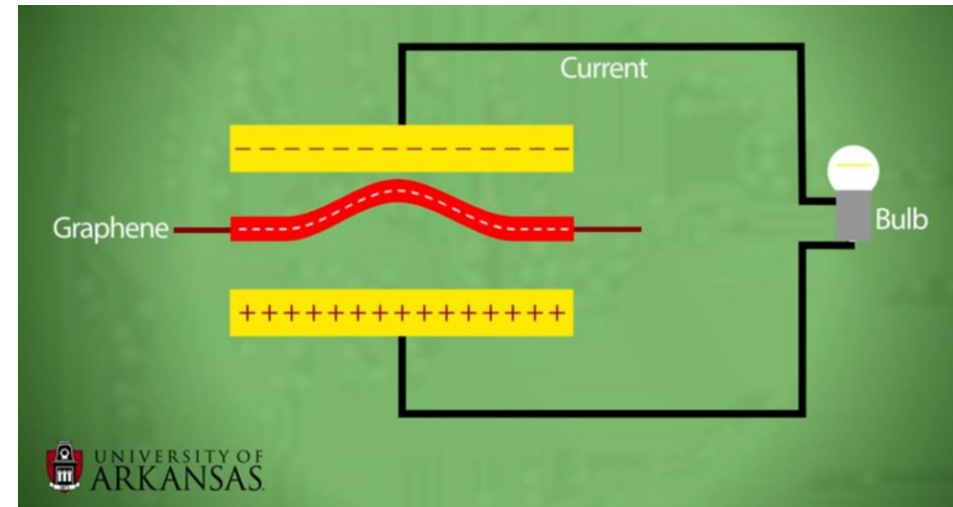
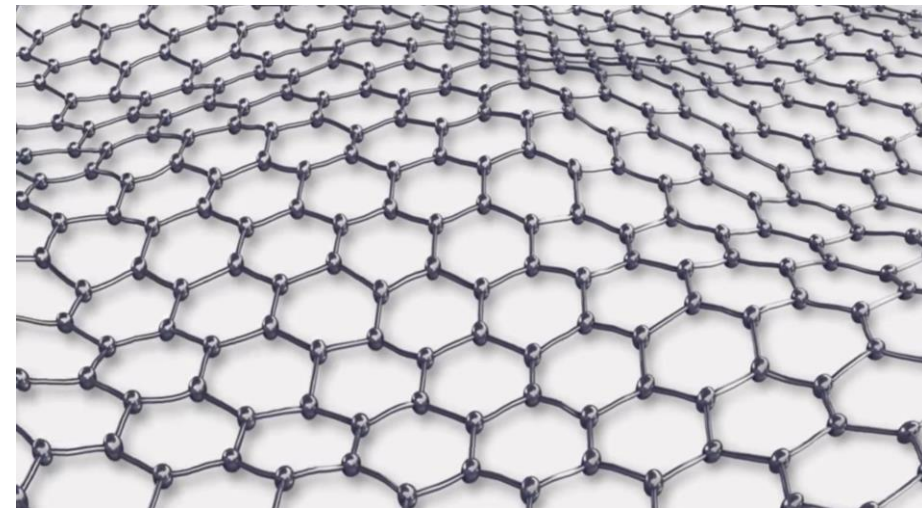
Hydro-Magnetic Dynamo

A hydro-magnetic dynamo the size of a 2-car garage could generate half of Hoover Dam's total power.

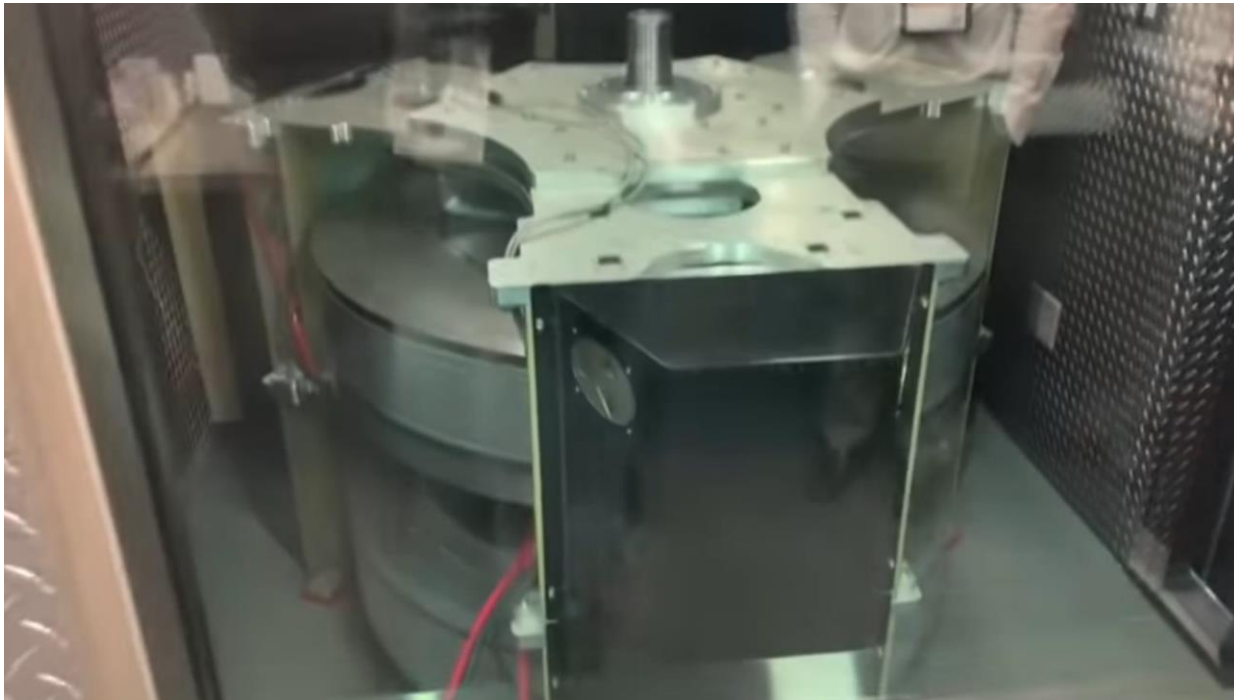


Neutrino voltaic Generator

A small percentage of neutrinos transfer their kinetic energies to carbon atoms which vibrate to generate an electric current.



Magnetic Propulsion Engine
Inductance Energy Corporation's
25-kilowatt commercial model was
installed in North Las Vegas.



Salt Water Flow Cell Car

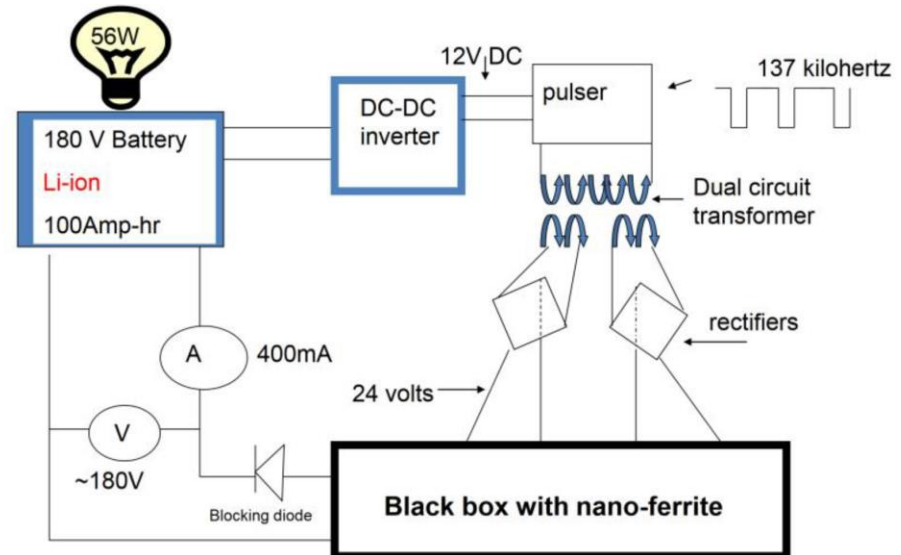
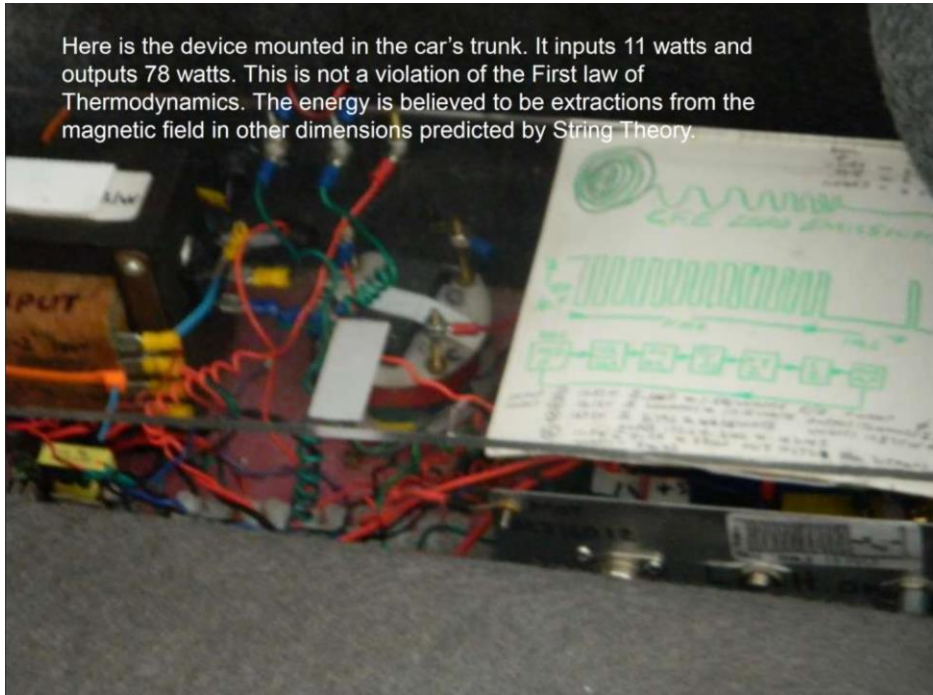
NanoFlowcell AG's 920-HP Quant E is the first electric car powered by salt water with a range of 373 miles.



Manelas Battery Charger

This charger is a one-pound 4" x 4" x .5" SrFe₁₂O₁₉ strontium ferrite billet with grains 3-10 nano-meters in size.

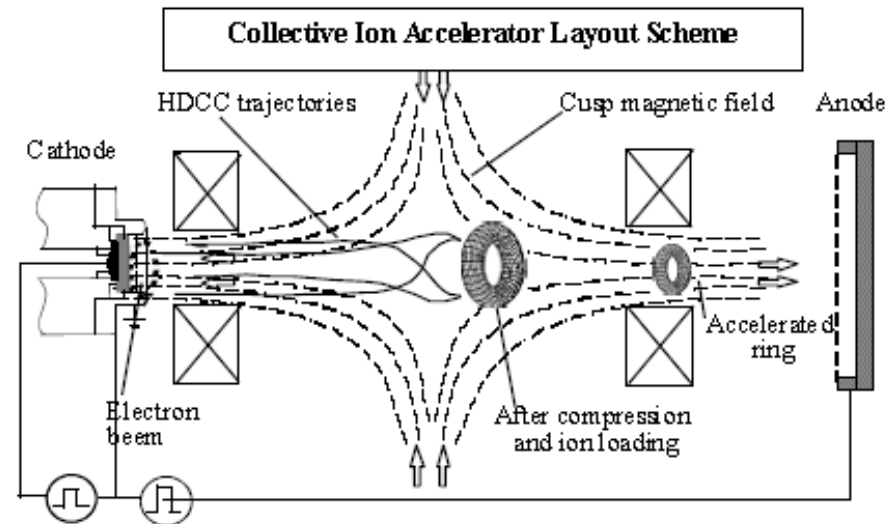
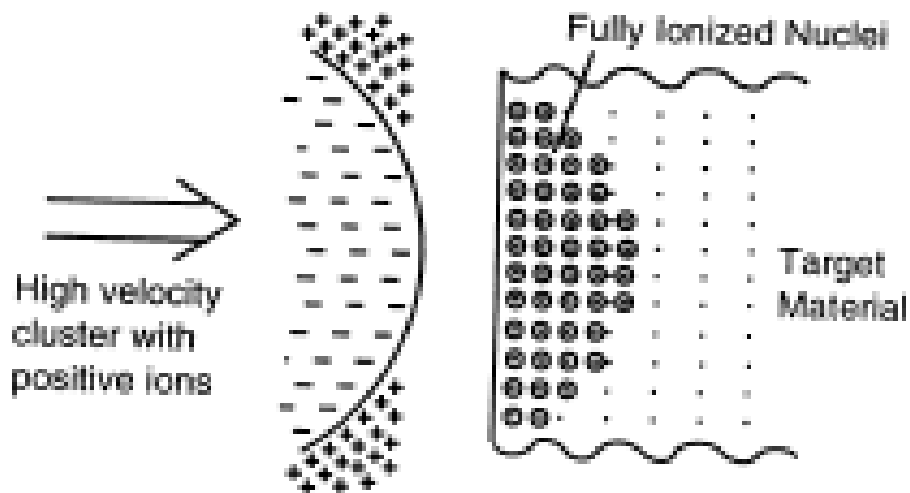
Here is the device mounted in the car's trunk. It inputs 11 watts and outputs 78 watts. This is not a violation of the First law of Thermodynamics. The energy is believed to be extractions from the magnetic field in other dimensions predicted by String Theory.



- An oscillating current is impressed on battery. Super important point here. The billet has a natural frequency of magneto-elastic origin when it is properly conditioned. We try to resonate with that frequency.

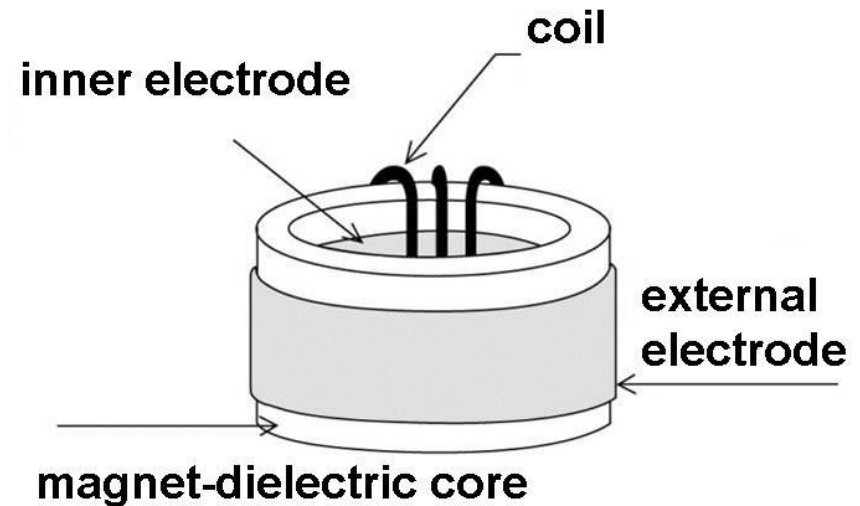
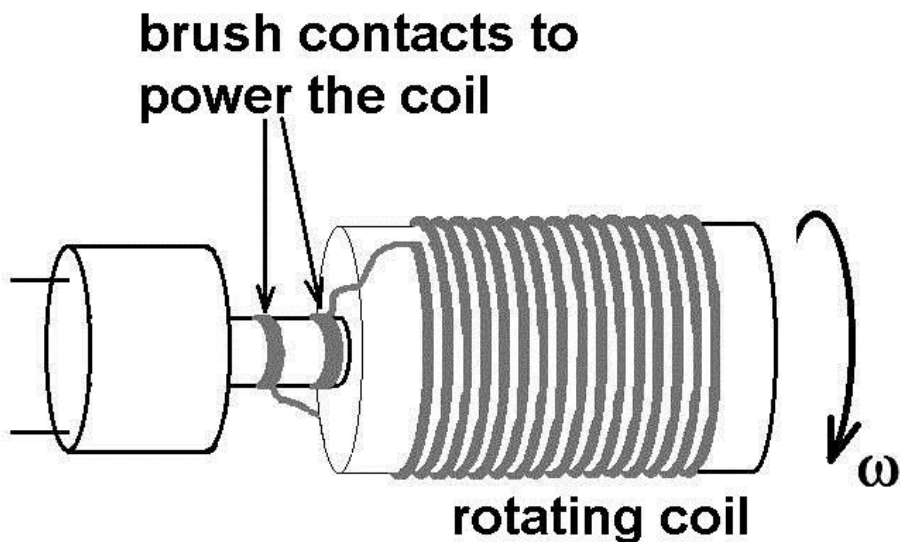
Remediating Nuclear Waste with Electron-Captured Protons Results in Net Energy Gain

Remediating process produces 10
to 20 times input energy.



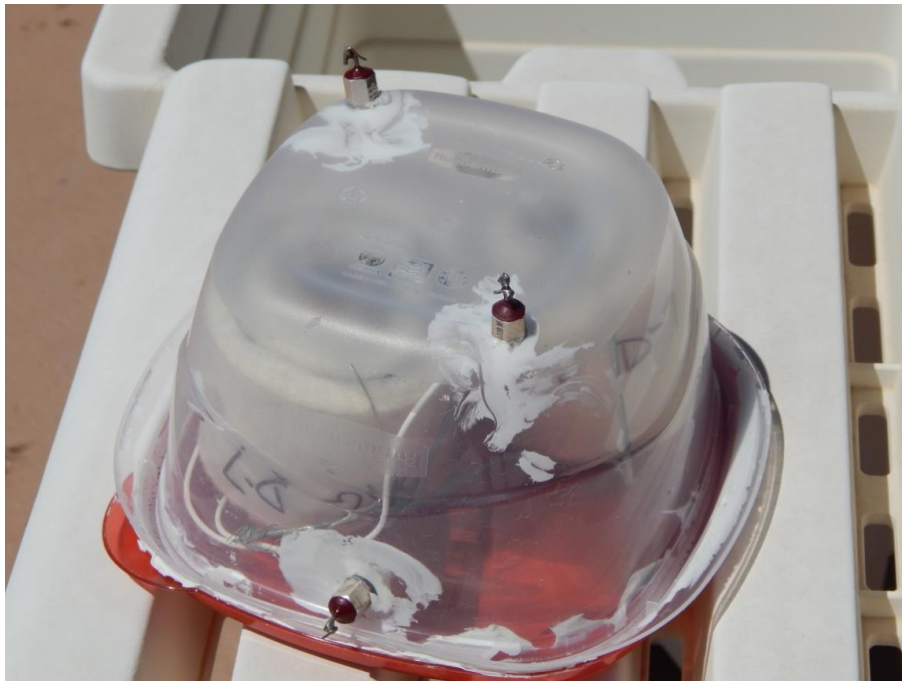
Methods of Influencing Radioactivity Decay

10 hours in a 5-kilowatt cavitator lowered radioactivity in ionized liquid material by 20%.



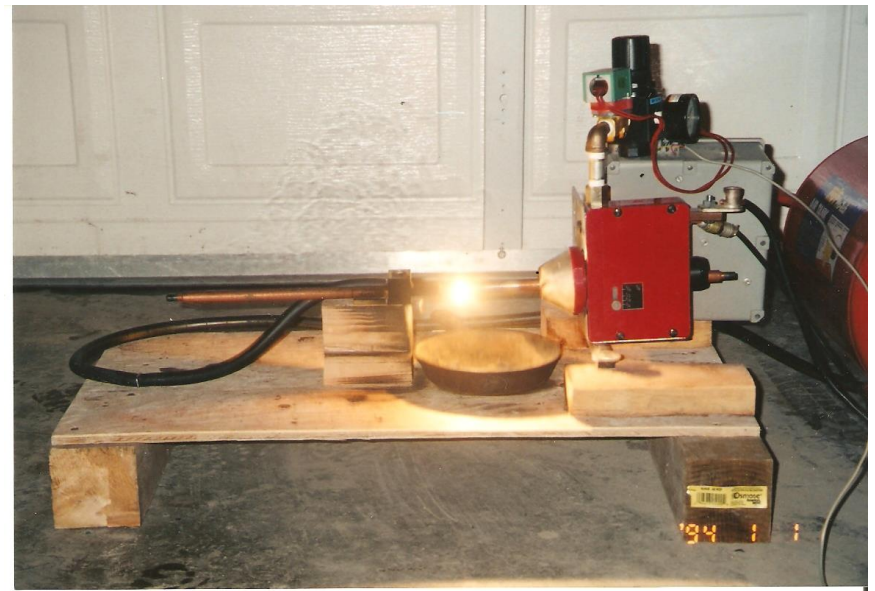
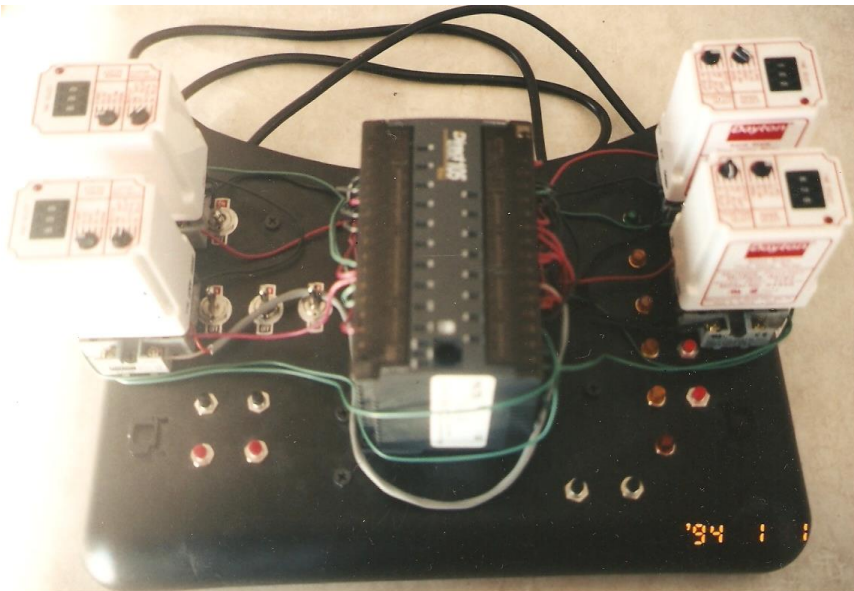
‘Hutchison Effect’ for Neutralizing Both Nuclear Waste and Dispersed Radioactivity

Hutchison-Lazaryan electronic
frequency generator affects miles.

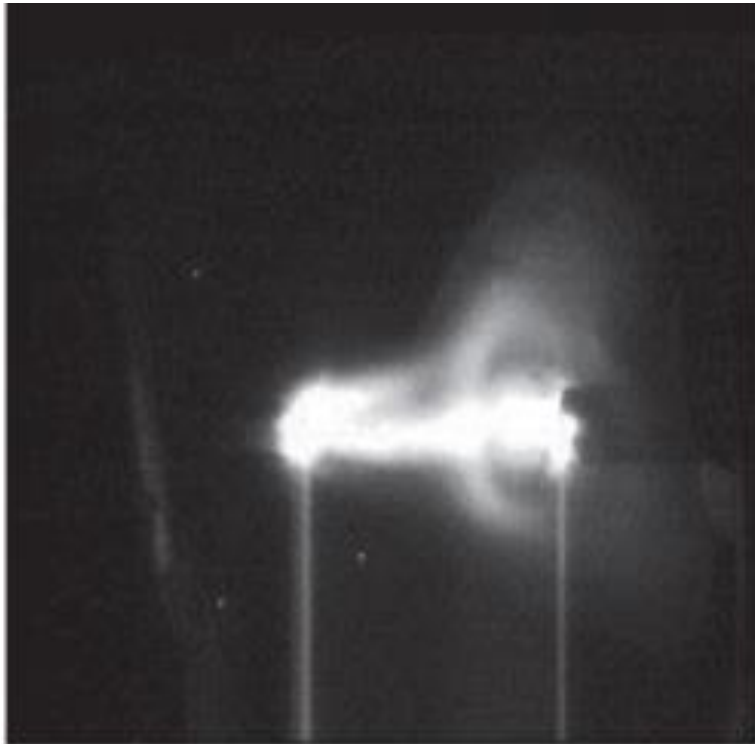


Implosion Machine can Annihilate High-Level Nuclear Waste

Electric arc welder is modified to duplicate ball lightning. Brown's gas focuses the flame on the radioactive material, with a critically controlled DC pulse to trigger implosion.



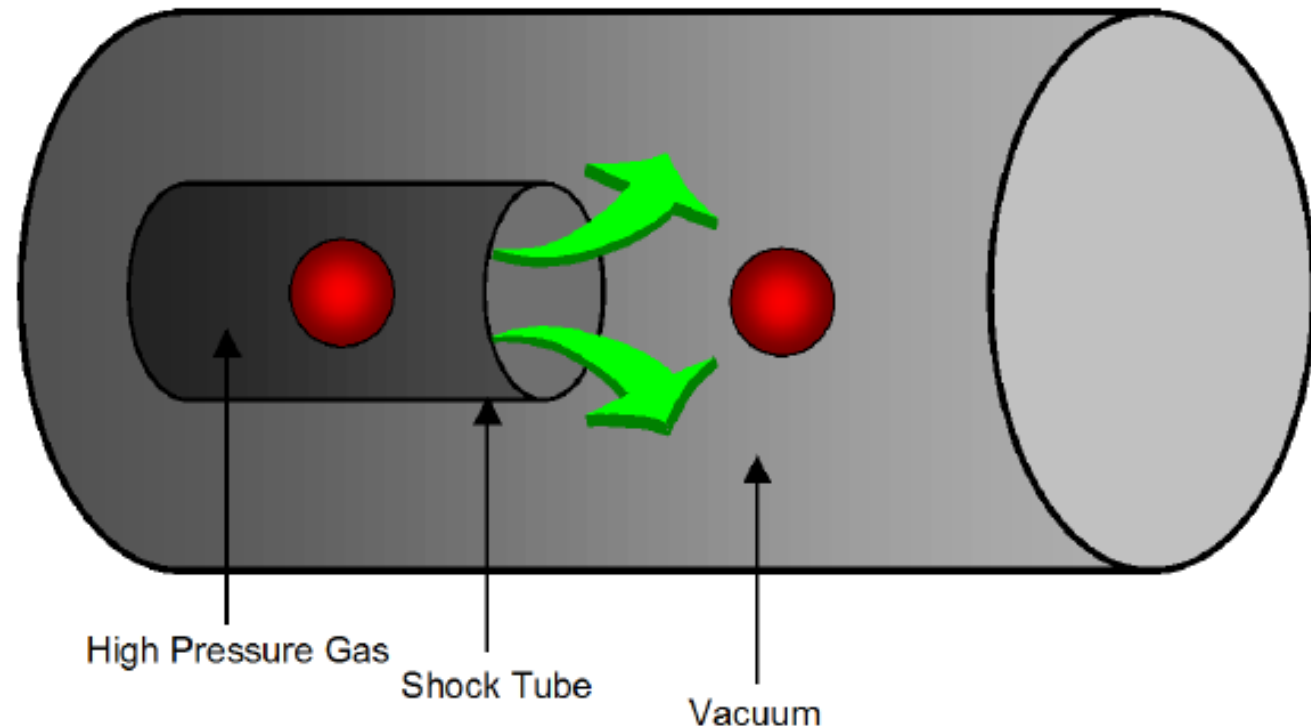
Colliding Plasma Toroid Fusion Reactors Can Lift Payloads into Orbit with 99% Cost Savings



Plasma Toroids Exit
Spacecraft 1700
Times Faster than
Chemical Propellants

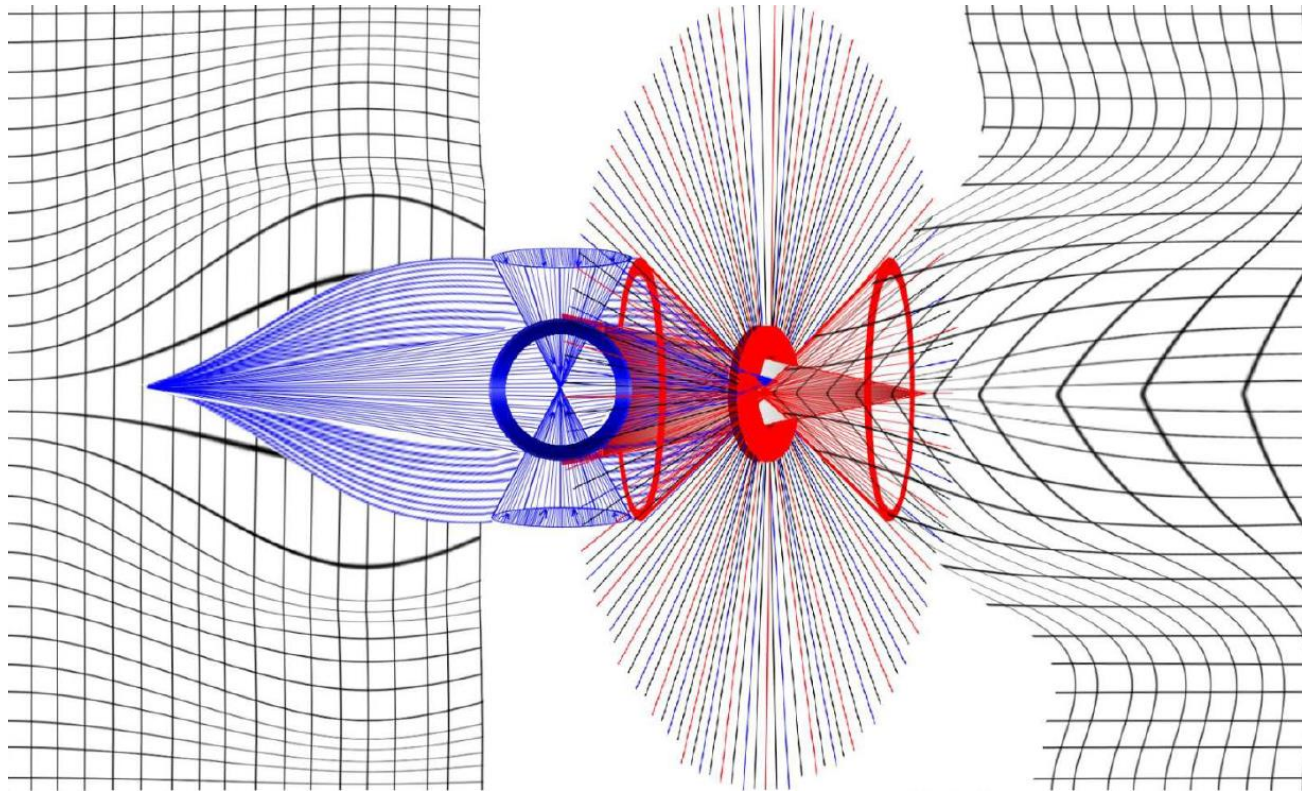
Meta-Stable Helium as Rocket Propellant

A laser returns a micro-crystal of meta-stable helium to gas with tens of millions of atmospheres of pressure.



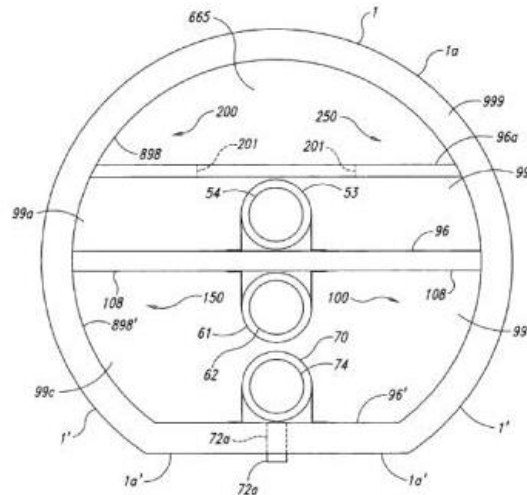
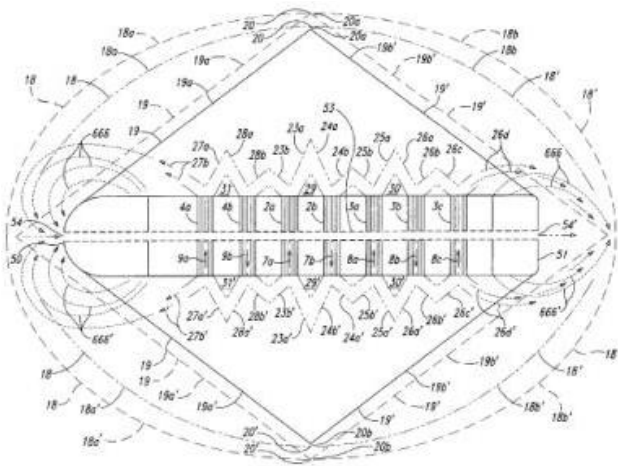
Magnetic Vortex Drive Engine

The field created by both expanding and compressing local magnetic fields propels a craft.



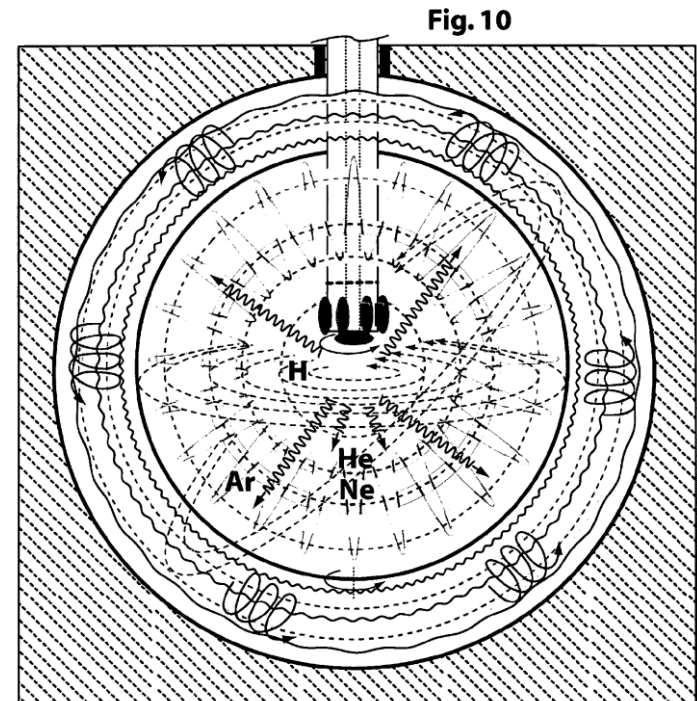
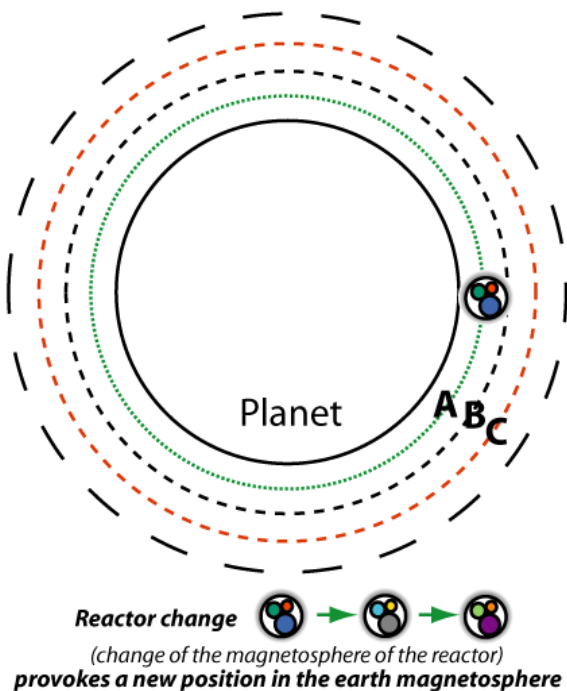
Tubular-Shaped Interstellar Space Craft

Round trip to Mars in 5.3 days (plus
1 day minus 3 days).



Double Magnetic Fields Plasma Reactor

Own magnetic and gravitational fields
counter Earth's magnetic and
gravitational fields.



Gary Vesperman

garyvesperman@yahoo.com

702-435-7947

Inventions are from the “Gallery of Clean Energy Inventions”. Link is in padrak.com/vesperman.